

Figure A.4 Rectangular Standard Weights
 Suitable for stacking and lifting by crane and fork-lifter

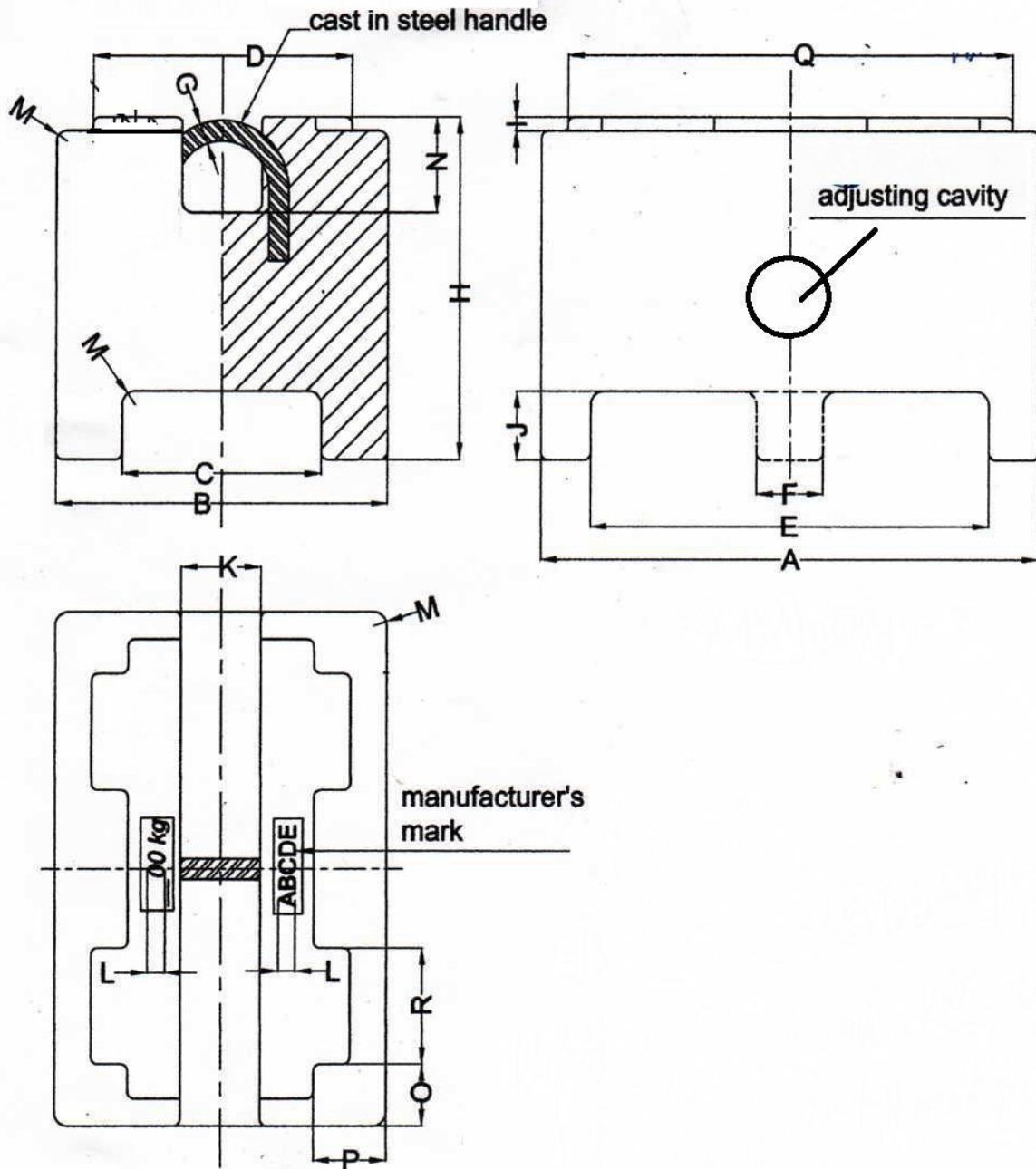


Table of Dimensions (in millimeters)

Nominal Value	A	B	C	D	E	F	G	H	I	J	K	L	M	N	O	P	Q	R
100 kg	340	225	120	175	190	-	25	280	20	100	80	20	20	100	80	60	260	105
200 kg	465	340	190	260	255	-	25	291	20	100	80	20	20	100	110	80	385	50
500 kg	750	500	300	390	600	100	35	314	20	100	120	24	20	140	80	135	670	180
1000 kg	750	500	300	390	600	100	35	500	20	100	120	24	20	140	80	135	670	180
2000 kg	1000	750	450	880	800	100	40	500	20	100	120	30	24	140	110	180	900	275